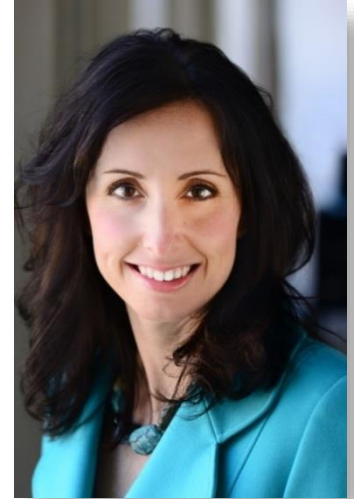


## Chris Segal Litvak, MBA



### *Consultant*

#### *Flynn Heath Holt Leadership*

Chris Litvak, a consultant with Flynn Heath Holt Leadership, is a certified executive coach and organizational consultant with a 20-year career leading strategic programs in the areas of leadership development, succession planning, organizational design, and talent management. She's known as a coach who leads with both backbone and heart, believing that we grow best by being both challenged and supported.

Prior to joining Flynn Heath Holt Leadership, Chris has held various corporate senior-level positions, including Principal Consultant at Blue Cross Blue Shield, Director of Talent Management at both Verizon and Fannie Mae, and Senior Associate at Booz Allen Hamilton.

Chris' significant experience with helping leaders succeed in Fortune 500 companies enables her to share the proven rules of leadership that can elude so many professionals. Chris has designed and implemented award-winning programs that have consistently improved retention rates. She's worked with more than 100 teams showing both qualitative and quantitative performance results. As a talent management advisor to executive teams, Chris leverages her unique insights into what makes leaders successful and creates a path for advancement all the way from mid-level management to the C-suite.

Chris holds a B.A. from Fairfield University, an M.B.A. from Boston College and is an ICF-certified leadership coach through Georgetown University. She is certified in multiple personality instruments such as Hogan and WorkPlace Big Five, and in GE's process improvement methodology called WorkOut.